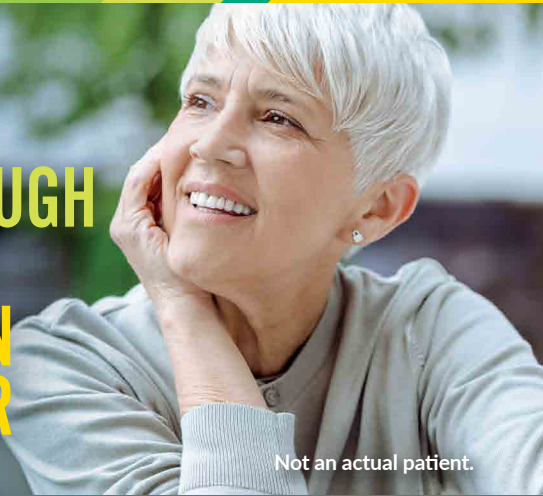


**NOW  
APPROVED**

**DUPIXENT**<sup>®</sup>   
(dupilumab) Injection 300mg

**A COPD  
BREAKTHROUGH  
TREATMENT  
YOU'VE BEEN  
WAITING FOR**



Not an actual patient.

**The first-of-its-kind treatment for Chronic Obstructive Pulmonary Disease (COPD).**

**INDICATION:**

DUPIXENT is a prescription medicine used with other medicines for the maintenance treatment of adults with inadequately controlled chronic obstructive pulmonary disease (COPD) and a high number of blood eosinophils (a type of white blood cell that may contribute to your COPD). DUPIXENT is used to reduce the number of flare-ups (the worsening of your COPD symptoms for several days) and can improve your breathing.

DUPIXENT is not used to relieve sudden breathing problems and will not replace an inhaled rescue medicine. It is not known if DUPIXENT is safe and effective in children with chronic obstructive pulmonary disease under 18 years of age.

**Please see additional Important Safety Information throughout and accompanying full Prescribing Information including Patient Information.**

**DUPIXENT**<sup>®</sup>  
(dupilumab) Injection 300mg

## BETTER BREATHING IS POSSIBLE

It's important to address those "bad days."

When symptoms are harder to manage than usual (like trouble breathing, chronic coughing, persistent phlegm, wheezing or chest tightness, or fatigue), you may be experiencing a flare-up. And it's important to take it seriously.

Usually, flare-ups will include new or worsening COPD symptoms that can last several days, and may also require additional medication or treatment to cope, such as:

- Use of a rescue inhaler
- Doses of oral steroids or antibiotics
- Going to the healthcare provider's office, hospital, or emergency room

### IMPORTANT SAFETY INFORMATION:

**Do not use** if you are allergic to dupilumab or to any of the ingredients in DUPIXENT<sup>®</sup>.

**Before using DUPIXENT, tell your healthcare provider about all your medical conditions, including if you:**

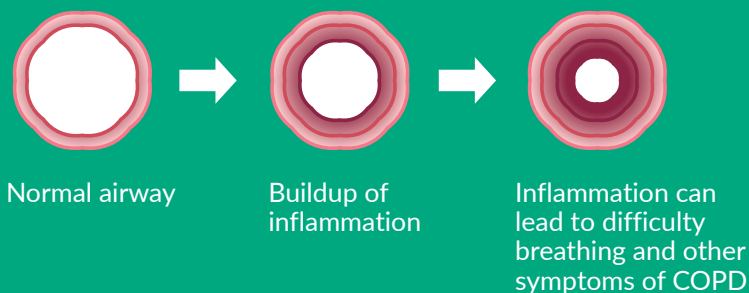
- have eye problems.
- have a parasitic (helminth) infection.



Research has shown underlying inflammation can lead to difficulty breathing and an increased risk of COPD flare-ups.

COPD is a chronic and progressive disease, and each flare-up can shorten the time until the next one.

### HOW INFLAMMATION AFFECTS THE AIRWAY



**DUPIXENT** is a new add-on treatment option to help manage your COPD so you can breathe better.

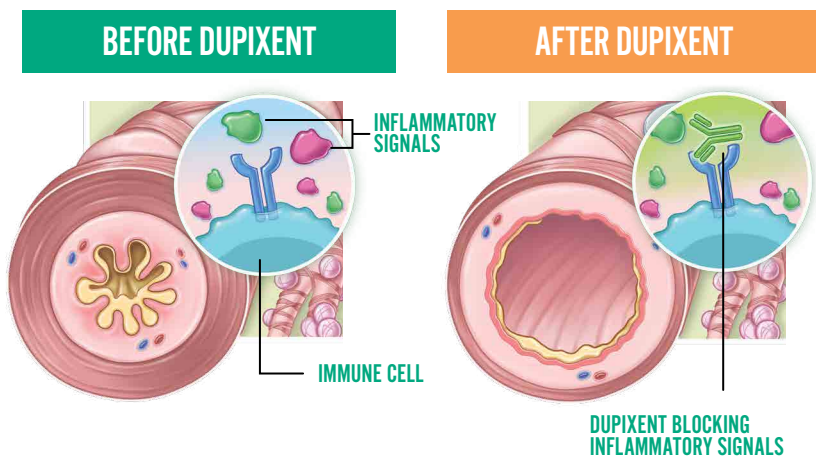
Please see additional Important Safety Information throughout and accompanying full [Prescribing Information](#) including [Patient Information](#).

**DUPIXENT**<sup>®</sup>  
(dupilumab) Injection 300mg

## A DIFFERENT APPROACH

DUPIXENT can help manage underlying sources of COPD symptoms. It is added when other COPD medications aren't enough.

DUPIXENT is the first and only COPD treatment of its kind. It works by targeting two of the key sources of inflammation.



Intended to show the mechanism only and not reflective of treatment effect with DUPIXENT. Image is illustrative only.

### IMPORTANT SAFETY INFORMATION (cont'd):

**Before using DUPIXENT, tell your healthcare provider about all your medical conditions, including if you (cont'd):**

- are scheduled to receive any vaccinations. You should not receive a “live vaccine” right before and during treatment with DUPIXENT.

**WHEN USED WITH COPD INHALERS,\* DUPIXENT CAN:**



**Reduce the number of flare-ups**



**Help you breathe better with long-lasting lung function improvement**



**Lead to improvements in patients' day-to-day lives<sup>†</sup>**

**The most common side effects in patients with chronic obstructive pulmonary disease include injection site reactions, common cold symptoms (nasopharyngitis), high count of a certain white blood cell (eosinophilia), viral infection, back pain, inflammation inside the nose (rhinitis), diarrhea, gastritis, joint pain (arthralgia), toothache, headache, and urinary tract infection.**

\*COPD inhalers are considered standard of care (SOC), which refers to a typical treatment approach prescribed by a healthcare professional for COPD.

<sup>†</sup>Assessed by SGRQ, a quality-of-life tool which measures COPD symptoms, physical activity, emotional well-being, and social functioning. In two trials, 51% of patients who received DUPIXENT + SOC experienced a quality-of-life improvement vs 43% and 47% with placebo + SOC. In one trial, results are descriptive; no definitive conclusions can be made.

**Please see additional Important Safety Information throughout and accompanying full Prescribing Information including Patient Information.**

**DUPIXENT**<sup>®</sup>  
(dupilumab) Injection 300mg

## TALKING TO YOUR DOCTOR ABOUT YOUR COPD



These questions can help guide you on what to ask when it comes to COPD.

It's important for your doctor to understand your symptoms and coping mechanisms you may use.

### **IMPORTANT SAFETY INFORMATION (cont'd):**

**Before using DUPIXENT, tell your healthcare provider about all your medical conditions, including if you (cont'd):**

- are pregnant or plan to become pregnant. It is not known whether DUPIXENT will harm your unborn baby.
  - A pregnancy registry for women who take DUPIXENT during pregnancy collects information about the health of you and your baby. To enroll or get more information call 1-877-311-8972 or go to <https://mothertobaby.org/ongoing-study/dupixent/>.
- are breastfeeding or plan to breastfeed. It is not known whether DUPIXENT passes into your breast milk.

Tell your healthcare provider about all the medicines you take, including prescription and over-the-counter medicines, vitamins, and herbal supplements.

**Especially tell your healthcare provider if you** are taking oral, topical, or inhaled corticosteroid medicines or have chronic obstructive pulmonary disease and also have asthma.

### **HAVE ANY OF THESE SYMPTOMS WORSENERD IN THE PAST 3 MONTHS?**

- Trouble breathing
- Chronic coughing
- Persistent phlegm
- Wheezing or chest tightness
- Fatigue

### **HAVE YOU DONE THE FOLLOWING TO COPE WITH WORSENERD SYMPTOMS IN THE LAST YEAR?**

- Adapted chores or activities to make them easier
- Canceled plans or avoided certain activities
- Used a rescue inhaler
- Taken steroids or antibiotics
- Gone to the hospital or ER

### **HOW WOULD YOU BEST DESCRIBE HOW COPD AFFECTS YOU?**

- It does **not** stop me from doing things I would like to do
- It stops me from doing **some** things I would like to do
- It stops me from doing **a lot of the things** I would like to do

**Please see additional Important Safety Information throughout and accompanying full Prescribing Information including Patient Information.**

# DUPIXENT<sup>®</sup>

(dupilumab) Injection 300mg

## ADDITIONAL QUESTIONS TO ASK YOUR DOCTOR:

- Could DUPIXENT help with the type of COPD I have?
- How does DUPIXENT work differently from my current treatments?
- What support is available for patients taking DUPIXENT?
- What are the most common side effects of DUPIXENT?



### IMPORTANT SAFETY INFORMATION (cont'd):

**Do not** change or stop your other medicines, including corticosteroid medicine or other asthma medicine, without talking to your healthcare provider. This may cause other symptoms that were controlled by those medicines to come back.

#### **DUPIXENT can cause serious side effects, including:**

- **Allergic reactions.** DUPIXENT can cause allergic reactions that can sometimes be severe. Stop using DUPIXENT and tell your healthcare provider or get emergency help right away if you get any of the following signs or symptoms: breathing problems or wheezing, swelling of the face, lips, mouth, tongue or throat, fainting, dizziness, feeling lightheaded, fast pulse, fever, hives, joint pain, general ill feeling, itching, skin rash, swollen lymph nodes, nausea or vomiting, or cramps in your stomach-area.

#### **DUPIXENT can cause serious side effects, including (cont'd):**

- **Eye problems.** Tell your healthcare provider if you have any new or worsening eye problems, including eye pain or changes in vision, such as blurred vision. Your healthcare provider may send you to an ophthalmologist for an exam if needed.
- **Joint aches and pain.** Some people who use DUPIXENT have had trouble walking or moving due to their joint symptoms, and in some cases needed to be hospitalized. Tell your healthcare provider about any new or worsening joint symptoms. Your healthcare provider may stop DUPIXENT if you develop joint symptoms.

**Please see additional Important Safety Information throughout and accompanying full Prescribing Information including Patient Information.**

# DUPIXENT<sup>®</sup>

(dupilumab) Injection 300mg

## HOW DUPIXENT IS TAKEN



DUPIXENT is an injection given subcutaneously (under the skin) once every two weeks. If a healthcare provider decides that you or a caregiver can give DUPIXENT injections, you should receive training on the right way to prepare and inject DUPIXENT.

## QUESTIONS ABOUT INJECTING?

If you have questions about taking DUPIXENT, we're here for you. [Click here](#) for supplemental injection resources, helpful tips, and training videos.

## IMPORTANT SAFETY INFORMATION (cont'd)

The most common side effects in patients with chronic obstructive pulmonary disease include injection site reactions, common cold symptoms (nasopharyngitis), high count of a certain white blood cell (eosinophilia), viral infection, back pain, inflammation inside the nose (rhinitis), diarrhea, gastritis, joint pain (arthralgia), toothache, headache, and urinary tract infection.

Tell your healthcare provider if you have any side effect that bothers you or that does not go away. These are not all the possible side effects of DUPIXENT. Call your doctor for medical advice about side effects. You are encouraged to report negative side effects of prescription drugs to the FDA. Visit [www.fda.gov/medwatch](http://www.fda.gov/medwatch), or call 1-800-FDA-1088.



## PRE-FILLED PEN

This pen features a design that keeps the needle hidden during use. A viewing window and 2-click sound let you know when your injection is complete.



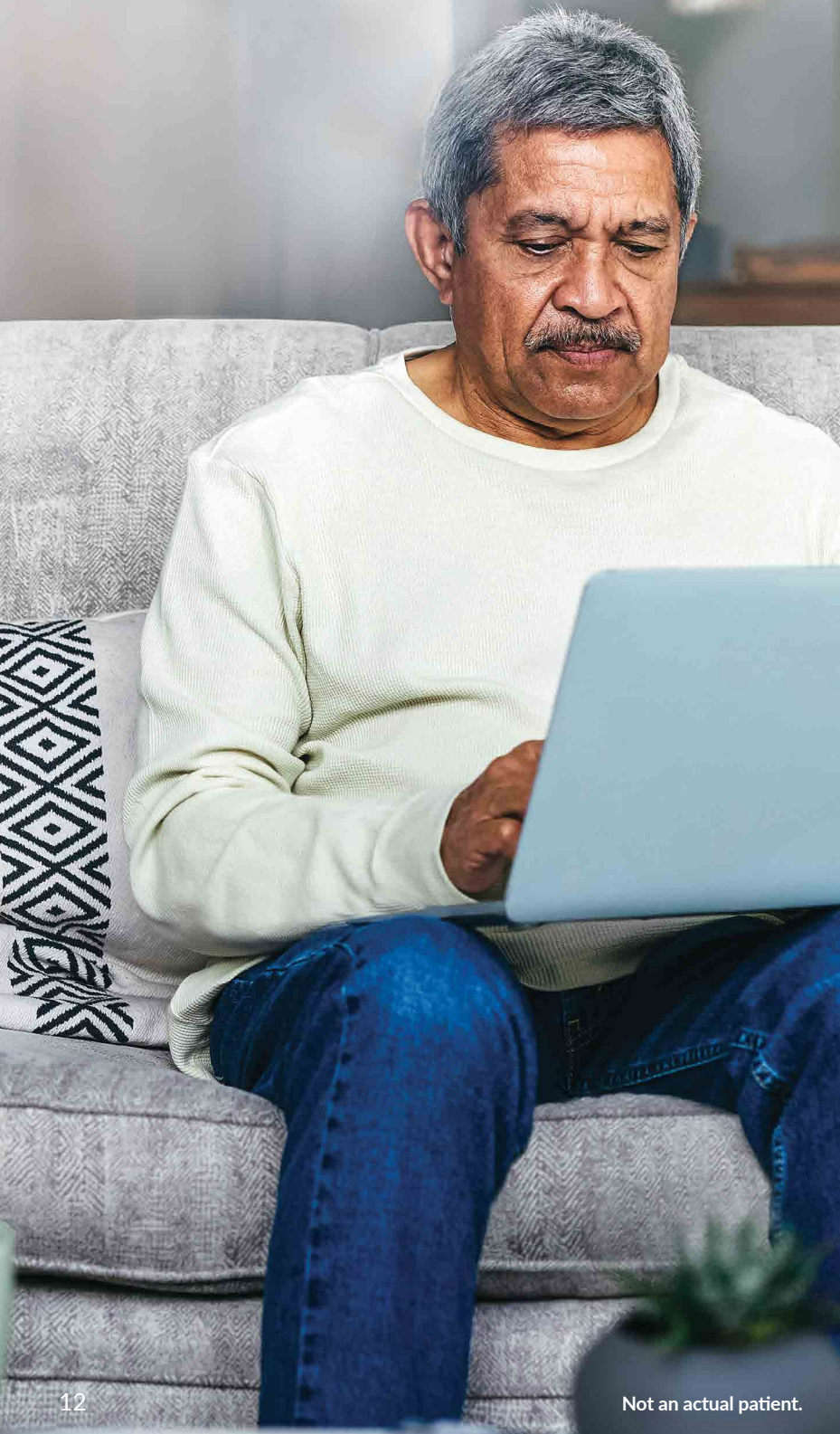
## PRE-FILLED SYRINGE

This syringe features a needle shield as well as a contoured finger grip to provide a firm hold while you control the speed of your injection.

Use DUPIXENT exactly as prescribed by your healthcare provider. It's an injection given under the skin (subcutaneous injection). Your healthcare provider will decide if you or your caregiver can inject DUPIXENT. **Do not** try to prepare and inject DUPIXENT until you or your caregiver have been trained by your healthcare provider.

**Please see additional Important Safety Information throughout and accompanying full [Prescribing Information](#) including [Patient Information](#).**

**DUPIXENT**<sup>®</sup>  
(dupilumab) Injection 300mg



## WHAT CAN *DUPIXENT MyWay*<sup>®</sup> DO FOR YOU?

Click here to learn about *DUPIXENT MyWay*, a patient support program designed to help you get access to *DUPIXENT* and stay on track while providing helpful tools and resources.

*DUPIXENT MyWay* can:



Assign a Case Manager to help research and explain your insurance benefits



Find ways to help you with the out-of-pocket cost of *DUPIXENT*



Provide supplemental injection training in person, virtually, or over the phone



Connect you with a Nurse Educator for *DUPIXENT* support



Send you refill and injection reminders

Please see additional **Important Safety Information** throughout and accompanying full **Prescribing Information** including **Patient Information**.

**DUPIXENT**<sup>®</sup>  
(dupilumab) Injection 300mg

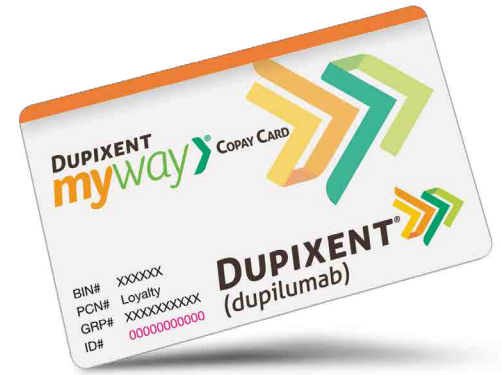
## NEED HELP PAYING?

The **DUPIXENT MyWay**<sup>®</sup> Copay Card Program may help reduce the out-of-pocket cost of DUPIXENT. Eligible patients covered by commercial health insurance may **pay as little as \$0\*** per fill for each DUPIXENT prescription (maximum of \$13,000 per patient per calendar year).

YOU COULD PAY **\$0\***  
AS LITTLE AS IF YOU...

- Have commercial insurance
- Have a DUPIXENT prescription for an FDA-approved condition
- Reside in the 50 United States, the District of Columbia, Puerto Rico, Guam, or the USVI
- Are a patient or caregiver 18 years or older

\*Approval is not guaranteed. Program has an annual maximum of \$13,000. **THIS IS NOT INSURANCE.** Not valid for prescriptions paid, in whole or in part, by Medicaid, Medicare, VA, DOD, TRICARE, or other federal or state programs including any state pharmaceutical assistance programs. This program is not valid where prohibited by law, taxed or restricted. **DUPIXENT MyWay** reserves the right to rescind, revoke, terminate, or amend this offer, eligibility, and terms of use at any time without notice. Any savings provided by the program may vary depending on patients' out-of-pocket costs. The program is intended to help patients afford DUPIXENT. Patients may have insurance plans that attempt to dilute the impact of the assistance available under the program. In those situations, the program may change its terms. Additional terms and conditions apply.



## OTHER OPTIONS FOR SUPPORT

Through the Patient Assistance Program, patients who are uninsured or rendered uninsured by their insurance provider could receive DUPIXENT free of charge if they qualify.

Those who may qualify must be at least 18 years of age or older, a resident of the 50 United States, the District of Columbia, Puerto Rico, Guam, or the USVI and demonstrate a financial need.

**Click here** to use the **Copay Cost and Coverage Tool**. This tool can help you see whether DUPIXENT is covered by your insurance plan.

**Please see additional Important Safety Information throughout and accompanying full Prescribing Information including Patient Information.**





Not actual patients.

## ASK YOUR DOCTOR ABOUT DUPIXENT TODAY

Click here to visit  
[DUPIXENT.com/COPD](https://www.dupixent.com/COPD)

### IMPORTANT SAFETY INFORMATION:

**Do not use** if you are allergic to dupilumab or to any of the ingredients in DUPIXENT.

**Please see additional Important Safety Information throughout and accompanying full Prescribing Information including Patient Information.**

**sanofi** | **REGENERON**<sup>®</sup>

DUPIXENT<sup>®</sup> and DUPIXENT MyWay<sup>®</sup> are registered trademarks of Sanofi Biotechnology.  
© 2024 Sanofi and Regeneron Pharmaceuticals, Inc. All Rights Reserved.  
US.DUP.24.05.0186 09/2024

Health information contained herein is provided for general educational purposes only. Your doctor is the single best source of information regarding your health. Please consult your doctor if you have any questions about your health or treatment.